

## VIOLIN 1

Theme from

## LIEBESTRAUM No. 3

simplified arrangement for  
string orchestra by  
JEFF MANOOKIAN

FRANZ LISZT

**Poco allegro**

*p*

9 (A)

18 (B)

26 (C) *f*

34 (D) *ff*

41 (E)

48 Musical staff 48-56. Treble clef, 4/4 time. Notes: G4, A4, B4, C5, B4, A4, G4. Dynamics: sfz, p. Circled letter F above the staff.

57 Musical staff 57-64. Treble clef, 4/4 time. Notes: G4, A4, B4, C5, B4, A4, G4. Dynamics: sfz, p.

65 Musical staff 65-72. Treble clef, 4/4 time. Notes: G4, A4, B4, C5, B4, A4, G4. Dynamics: mp. Circled letters G and H above the staff.

73 Musical staff 73-79. Treble clef, 4/4 time. Notes: G4, A4, B4, C5, B4, A4, G4. Dynamics: mf, p. Circled letter I above the staff.

80 Musical staff 80-87. Treble clef, 4/4 time. Notes: G4, A4, B4, C5, B4, A4, G4. Dynamics: pp.

## VIOLIN 2

Theme from

**LIEBESTRAUM No. 3**

simplified arrangement for  
string orchestra by  
**JEFF MANOOKIAN**

**FRANZ LISZT****Poco allegro***pizz.**p*

7 **A**

14

21 **B**

28 *arco* **C** *f*

35 **D** *ff*

43 **E**

*sfz*

This musical staff contains measures 43 through 51. It begins with a treble clef and a key signature of one sharp (F#). The melody consists of eighth and quarter notes. A circled letter 'E' is positioned above the staff at measure 45. A double bar line is placed below the staff at measure 51, and the dynamic marking *sfz* is written below the final note.

52 **F**

*p*

This musical staff contains measures 52 through 60. It begins with a treble clef and a key signature of one sharp (F#). The melody consists of quarter notes with stems pointing up. A circled letter 'F' is positioned above the staff at measure 52. The dynamic marking *p* is written below the staff at measure 52.

61 **G**

This musical staff contains measures 61 through 69. It begins with a treble clef and a key signature of one sharp (F#). The melody consists of quarter notes with stems pointing up. A circled letter 'G' is positioned above the staff at measure 61.

70 **H**

*mp* pizz. arco

This musical staff contains measures 70 through 76. It begins with a treble clef and a key signature of one sharp (F#). The melody starts with a rest, followed by quarter notes. A circled letter 'H' is positioned above the staff at measure 70. The dynamic marking *mp* is written below the staff at measure 70. The instruction 'pizz.' is written above the staff at measure 70, and 'arco' is written above the staff at measure 72. A double bar line is placed below the staff at measure 76.

77 **I**

*mf* *p* *pp*

This musical staff contains measures 77 through 84. It begins with a treble clef and a key signature of one sharp (F#). The melody consists of quarter notes with stems pointing up. A circled letter 'I' is positioned above the staff at measure 77. The dynamic marking *mf* is written below the staff at measure 77, *p* at measure 79, and *pp* at measure 84. A double bar line is placed below the staff at measure 84.

## VIOLA

Theme from

## LIEBESTRAUM No. 3

simplified arrangement for  
string orchestra by  
JEFF MANOOKIAN

FRANZ LISZT

Poco allegro

7 **A**

14

21 **B**

28 **C** arco **f**

36 **D** **ff**

46 **E** **sfz** **F** **p**

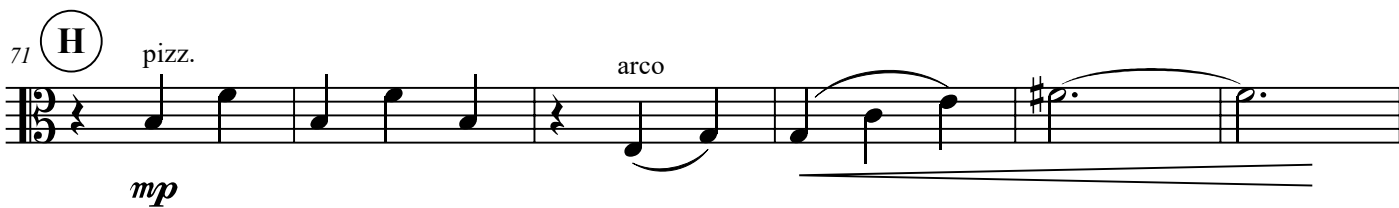
55



63



71



77



CELLO  
Theme from

# LIEBESTRAUM No. 3

simplified arrangement for  
string orchestra by

JEFF MANOOKIAN

FRANZ LISZT

**Poco allegro**

pizz.

*p*

8

16

24 **(B)** arco **(C)**

34 **(D)** *ff*

42 **(E)**

50 **(F)** pizz. *sfz* *p*

58 **(G)**

66 arco **(H)** *mp*

75 **(I)** *mf* *p* *pp*

This page has been left blank to facilitate page turns.



## CONTRABASS

Theme from

## LIEBESTRAUM No. 3

simplified arrangement for  
string orchestra by  
JEFF MANOOKIAN

FRANZ LISZT

Poco allegro

pizz.

*p*

8 (A)

16

24 (B)

32 (C) arco *f* (D) *ff*

41 (E) *sfz* (F)

52 *p*

63 (G) (H)

73 (I) *mp* 4 *pp*

*mf* *p*

This page has been left blank to facilitate page turns.